

ISO 2858 Standard End Suction Centrifugal Pump - ISO JES Series



Long Coupled Pump Assembly

Applications

- *Aggressive Water Supply
- *Sea Water Supply or Circulation
- *Cold or Hot Water Circulation
- *Clean or Pure Water Supply
- *Variety of PetroChemicals
- *Other Special Applications

Available Materials

EN	ASTM	Type
1.4308	A744 CF8	Austenitic
1.4408	A744 CF8M	Austenitic
1.4409	A744 CF3M	Austenitic
1.4517	A890 Grade 4B	Duplex
1.4471	A890 Grade 6A	Super - Duplex

Stainless Steel

Optional Flange Rating

- * ISO / DIN PN 16
- * ANSI B 16.5 150#
- * JIS 2212 10K



Close Coupled Pump Assembly



Close Coupled Pump Assembly

Spheroidal Graphite Cast Iron

Material Grade


- * ISO - 1083 Grade JS / 450 - 10 - S
- * ASTM A 536 Grade 65 - 45 - 12

Applications

- *Water Supply and boosting
- *Circulation of air - conditioning system
- *Liquid transfer in industry and horticulture
- *Agricultural, Irrigation and Spray
- *Head up to 160meters
- *Temperature : -20 to 160
- *Capacity : Up to 400m³/hr



Long Coupled Pump Assembly

 JMI - Simavis ISO Pump and Supreme Motor Pump are designed in accordance with ISO 2858 - DIN 24256 Standard. All wet parts, including volute casing, shaft, impeller are made of Stainless Steel for long time endurance, acid - alkaline resisting and rust free liquid transfer.

Applications

Water Supply

Water supply & distribution ; pressure boosting in waterworks and substations, sprinkler, drip and flood irrigation.

Industry

Water supply and circulation and heating systems. Pumping of cooling brine and cooling agents in equipment and mechanical engineering. Paper and sugar industries, iron and steel production, condensate transfer and boiler fill. Washing and cleaning installations, water - curtain spray - paint bays, emptying and filling of tanks and reservoirs, pumping of seawater and brackish water, moistening in dedusting plants.

Building Services

Circulation of liquids, heating and cooling water in central heating , ventilation and air - conditioning systems, fire - fighting service. Water circulation for swimming pools, general mechanical services.


Environment Engineering


Filter installations, water treatment systems , dedusting plants, recooling systems, and installations for soil sanitation infiltration water treatment.

Vessels

Circulation of cooling system for fish catch, water supply and general mechanical service.

Pump Features

 JMI - Simavis ISO Pump and Supreme Motor Pump have superior hydraulic design and incorporate high technology manufacturing methods, which enable significantly higher efficiency for less power consumption and minimum maintenance. All these features guarantee Prostain pump users continuing economy in all applications.


 JMI - Simavis ISO Pump and Supreme Pump are single stage, non self - priming, centrifugal volute pumps, conforming to ISO 2858 Standard.

Operating Condition

Flow : Max. 150m³
Head : Max. 120m
Liquid Temperature : -15°C to 180°C
Operating Temperature : Max. 16 bar
Designed for non-aggressive, non-explosive thin and clean liquids without solid particles or fibres.

International Standard

Conforming to ISO 2858 Standard means dimensional interchangeability with other makes of pumps, manufactured to the same international standard.

 JMI - Simavis pumps exceed the ISO performance standard because of hydraulic design superiority. Due to the pump design, the backplate and impeller can be easily dismantled from the drive end without removing the volute casing from the pipework. As standard of Prostain ISO Pump, a support foot is fitted to the bearing housing.



Standard Features

JMI - Simavis pumps include taper mounted and keyed impeller for easy removal from shaft during servicing and positive locking during operation; heavy duty shaft with large capacity impeller and bearing for safe operation at high speed. As type different material volute added safety; reusable O ring body seal; minimum number of parts for full range (only two shaft modules) reduces spare parts stocking ; double curvature impeller vanes produce highly efficient suction performance. Different material shaft ; ductile iron shaft clamp ; Different material volute with the integral suction and discharge flanges and mounting feet; pressure rated to 1200kPa (120m head); different material, backplate, and impeller nut; cast iron housing with sealed for life grease packed bearings; lip type shaft seals to protect bearing; single mechanical seal.

Motor

The JMI - Simavis standard motor is a totally enclosed, fan - cooled squirrel - cage motor that dimensionally complies with IEC and DIN. The motor pump used standard off the shelf foot mounted and flange electric motors which require no modification and therefore no more difficulty to purchase the motor without no long coupled units. Foot mounted on the motor and on the pump body combine to provide exceptionally rigid mounting for the complete unit.

Enclosure Class	:	IP 54
Insulation Class	:	Class F
Ambient Temperature	:	According to IEC
50Hz Voltages	:	3 x 220 - 240 / 380 - 415v
60Hz Voltages	:	3 x 200 - 230 / 380 - 460v

Optional Base Assembly

Baseplate Kit

A baseplate kit is available to allow on - site basing up of pump and motor, sizes to suit all models and motors. The kit including baseplate, flexible or spacer coupling, coupling guard, all fasteners and shims required for on - site alignment.

Couplings

Flexible and spacer coupling :

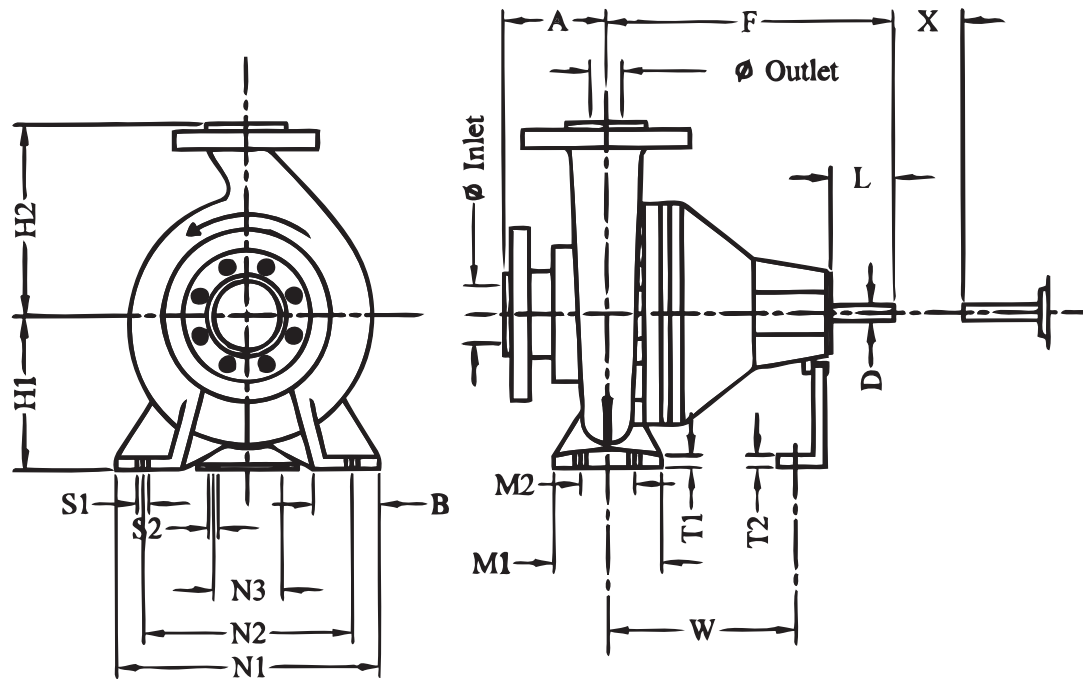
A coupling with spacer enables dismantling of the complete discharge cover including shaft seal and impeller without removing the motor or pump body from the baseplate.

Maximum Operating Temperature

Maximum pump liquid temperature for the standard ISO Line pump is 80°C using standard seals. Liquids up to 180°C can be handled by using special seals.



ISO 2858 Standard Pump Dimensions (Bare Shaft)

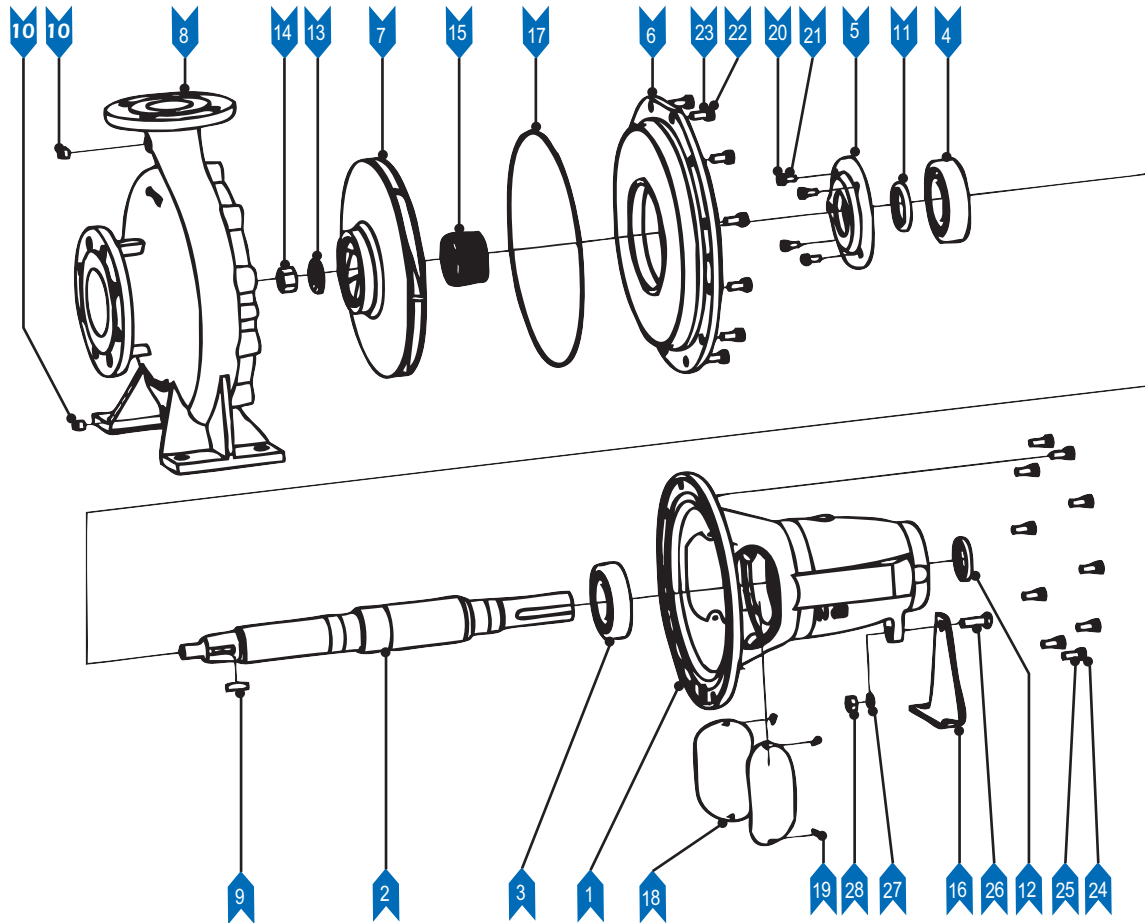


ISO JES SERIES

Bare Shaft Dimensions(mm)

Pump Model			Pump Dismensions							Mounting Dimensions							Bolt Holes			Shaft End			Weight
IN	OUT	IMP	A	F	H1	H2	B	M1	M2	N1	N2	N3	T1	T2	W	S1	S2	D	L	X	KG		
50	32	160	80	385	132	160	50	100	70	240	190	110	10	4	285	M12	M12	24	50	100	38		
50	32	200	80	385	160	180	50	100	70	240	190	110	10	4	285	M12	M12	24	50	100	44		
65	50	160	80	385	132	160	50	100	70	240	190	110	10	4	285	M12	M12	24	50	100	39		
65	40	200	100	385	160	180	50	100	70	265	212	110	10	4	285	M12	M12	24	50	100	46		
65	40	250	100	500	180	225	65	125	95	320	250	110	12	5	370	M12	M12	32	80	100	65		
80	65	160	100	385	160	180	50	100	70	265	212	110	10	4	285	M12	M12	24	50	100	44		
80	50	200	100	385	160	200	50	100	70	265	212	110	10	4	285	M12	M12	24	50	100	48		
80	50	250	125	500	180	225	65	125	95	320	250	110	12	5	370	M12	M12	32	80	100	70		
100	80	160	100	385	160	200	65	125	95	280	212	110	12	4	285	M12	M12	24	50	100	56		
100	65	200	100	500	180	225	65	125	95	320	250	110	12	5	370	M12	M12	32	80	140	66		
100	65	250	125	500	200	225	80	160	120	360	280	110	12	5	370	M16	M12	32	80	140	78		
125	100	200	125	500	200	280	80	160	120	360	280	110	13	5	370	M16	M12	32	80	140	81		
125	80	200	125	500	180	250	65	125	95	345	280	110	14	6	370	M12	M12	32	80	140	79		
125	80	250	125	500	225	280	80	160	120	400	315	110	14	6	370	M16	M12	32	80	140	95		
125	100	250	140	530	225	280	80	160	120	400	315	110	14	6	370	M16	M12	42	110	140	110		
65	40	315	125	500	200	250	65	125	95	345	280	110	14	6	370	M12	M12	32	80	100	103		
80	50	315	125	500	225	280	65	125	95	345	280	110	14	6	370	M12	M12	32	80	100	108		
100	65	315	125	530	225	280	80	160	120	400	315	110	14	6	370	M16	M12	42	110	140	117		
125	80	315	125	530	250	315	80	160	120	400	315	110	14	6	370	M16	M12	42	110	140	126		
125	100	315	140	530	250	315	80	160	120	400	315	110	15	8	370	M16	M12	42	110	140	134		
150	125	200	140	500	250	315	80	160	120	400	315	110	15	8	370	M16	M12	32	110	140	112		
150	125	250	140	530	250	355	80	160	120	400	315	110	15	8	370	M16	M12	42	110	140	131		
150	125	315	140	530	280	355	100	200	150	500	400	110	15	8	370	M20	M12	42	110	140	158		

ISO 2858 Part List



Parts and Material List

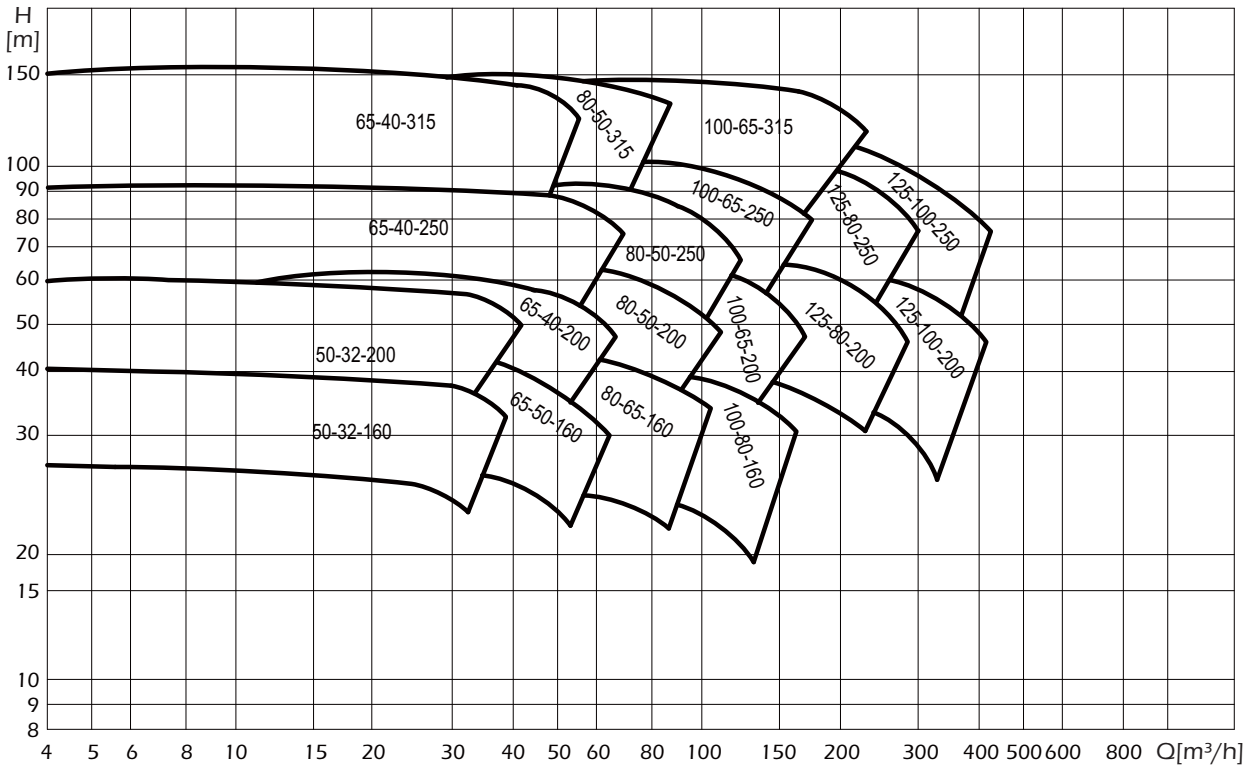
Part No.	Material	Part No.	Material
1	SS 420	15	Carbon vs Ceramic
2	SS 420	16	Steel
3		17	NBR
4		18	Cast Iron
5	Cast Iron	19	Steel
6	Ductile Cast Iron	20	Steel
7	Ductile Cast Iron	21	Steel
8	Ductile Cast Iron	22	Steel
9	SS 316	23	Steel
10	Steel	24	Steel
11	NBR	25	Steel
12	NBR	26	Steel
13	Steel	27	Steel
14	Steel	28	Steel

All technical information is subject to change without notice.

* Other material SS304 , SS 316 , SS 316L and Duplex - Upon request

ISO 2858 Part List

**Pump Selection Table for End Suction Pumps
2 Poles, 50 HZ**



4 Poles, 50 HZ

